

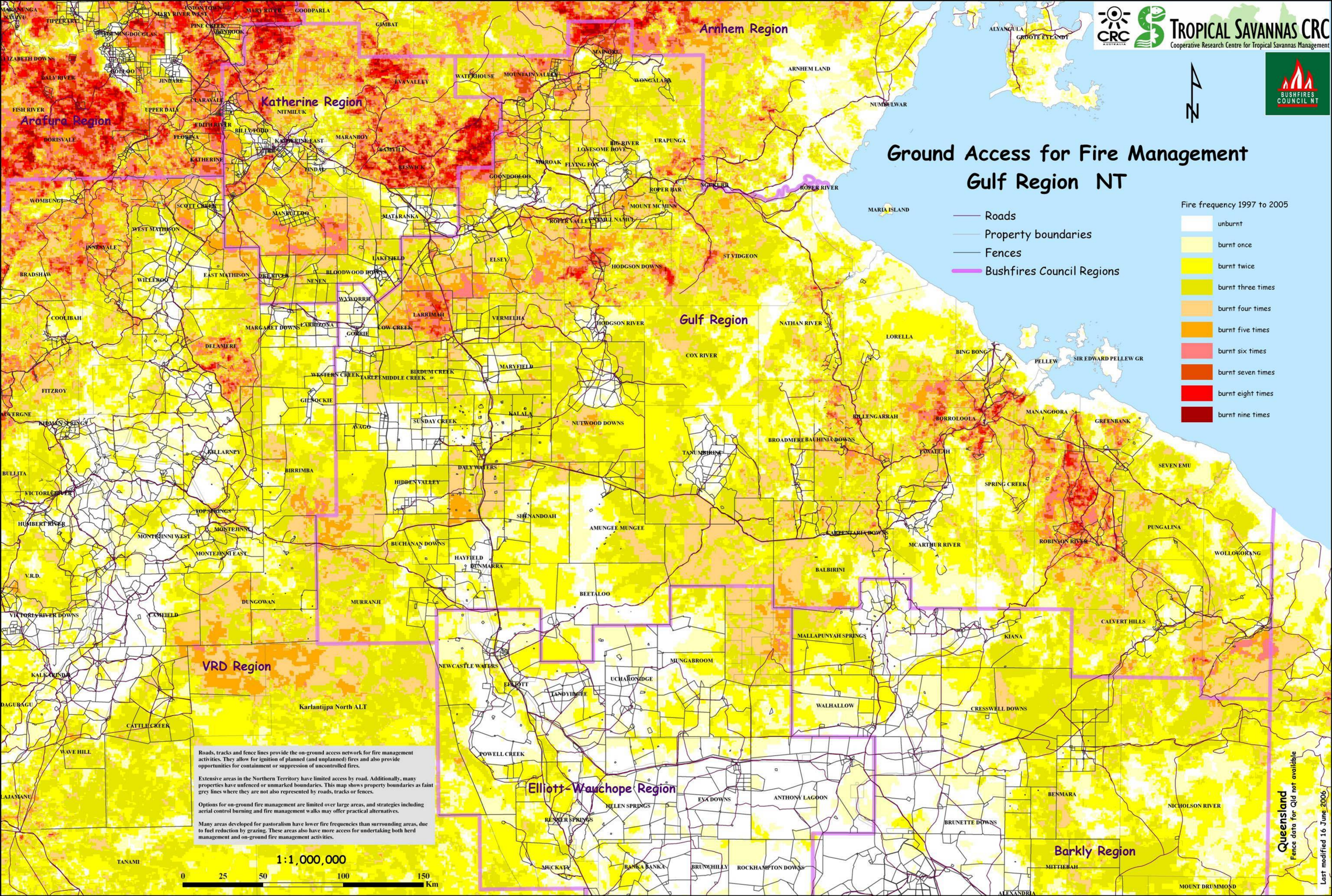


# Ground Access for Fire Management Gulf Region NT

Fire frequency 1997 to 2005

- unburnt
- burnt once
- burnt twice
- burnt three times
- burnt four times
- burnt five times
- burnt six times
- burnt seven times
- burnt eight times
- burnt nine times

— Roads  
— Property boundaries  
— Fences  
— Bushfires Council Regions



Roads, tracks and fence lines provide the on-ground access network for fire management activities. They allow for ignition of planned (and unplanned) fires and also provide opportunities for containment or suppression of uncontrolled fires.

Extensive areas in the Northern Territory have limited access by road. Additionally, many properties have unfenced or unmarked boundaries. This map shows property boundaries as faint grey lines where they are not also represented by roads, tracks or fences.

Options for on-ground fire management are limited over large areas, and strategies including aerial control burning and fire management walks may offer practical alternatives.

Many areas developed for pastoralism have lower fire frequencies than surrounding areas, due to fuel reduction by grazing. These areas also have more access for undertaking both herd management and on-ground fire management activities.

